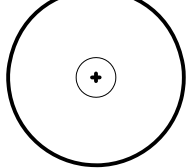
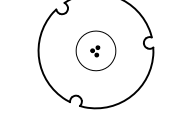

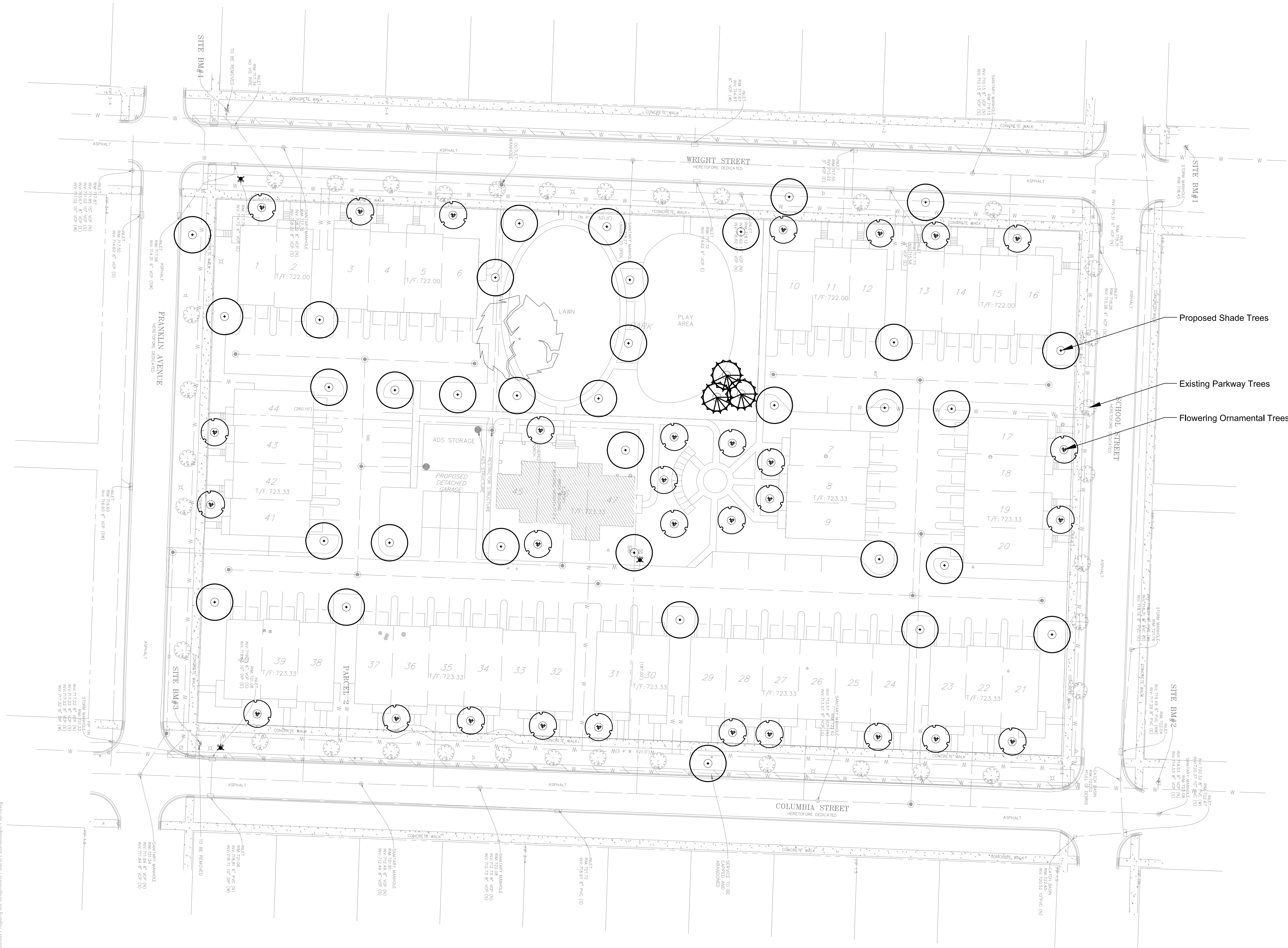


PLANTING NOTES

- Sod limit line is approximate. Seed/Sod to limits of grading and disturbance. Contractor responsible for restoration of any unauthorized disruption outside of designated construction area.
- Contractor responsible for erosion control in all sodded areas.
- Tree mulch rings in turf areas are 5 foot diameter, typical. Contractor shall provide a mulch ring around all existing trees within the limit of work. Remove all existing grass from area to be mulched and provide a typical v-trench edge.
- Bedlines are to be spade cut to a minimum depth of 3 inches unless otherwise shown on the plans. Curved bedlines are to be smooth and not segmented.
- Do not locate plants within 10' of utility structures, or within 5' horizontally of underground utility lines unless otherwise shown on the plans. Consult with Landscape Architect if these conditions exist.
- Install topsoil as required to meet finish grade and achieve positive drainage. Install 2" of soil conditioner in all planting areas. Till to a 6" depth.
- Provide 3" mulch depth for tree and shrub planting. Provide 2" mulch depth in all perennial plant beds.
- Irrigation: Provide head to head spray coverage in all turf and planting areas. New irrigation to tie into existing system. Proposed building to supply water. Provide separate irrigation submeter for SoulCycle water use. Provide shop drawings for owner approval.
- Refer to specifications for additional conditions, standards and notes.

PLANTING LEGEND

-  Shade Tree, typical. See detail for Installation. Quantity: 34, 3" Caliper
-  Ornamental Tree, typical. See detail for installation. Quantity: 30, 6' Height
-  Evergreen Tree, typical. See detail for installation. Quantity: 3, 6' Height



Proposed Shade Trees

Existing Parkway Trees

Flowering Ornamental Trees


ISSUED
July 15, 2020
REVISIONS

No	Date	Issue

CHECKED BY: GBR
DRAWN BY: EAS

SHEET TITLE
Preliminary Landscape Plan

SCALE IN FEET
1" = 30'



NORTH
SHEET NUMBER

L1.0
©2020 Hitchcock Design Group